

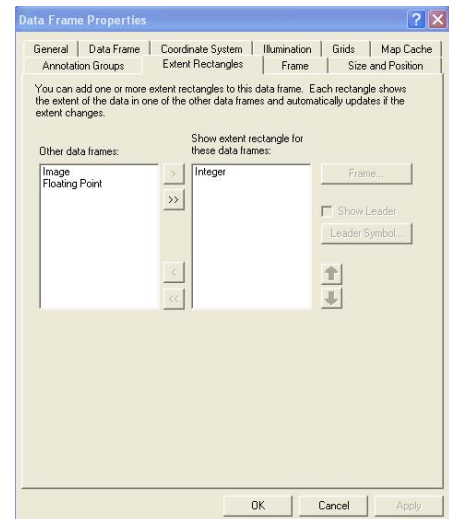
## Creating a map with multiple dataframes.

There are times when you want to create multiple maps on one page. One example would be creating an inset map. Another situation, particularly common in 621 since we're creating a lot of different maps, is when we want to show multiple views of the same area. This guide provides some simple suggestions on how to accomplish this, using the hmbarea dataset we've been using.

When preparing the map you will switch back and forth between data and layout view.

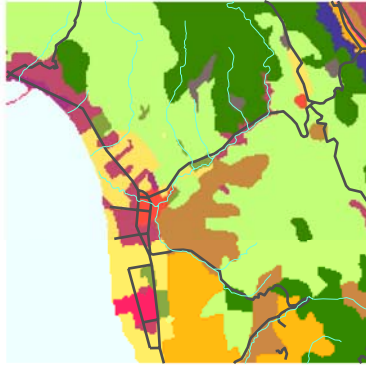
- Change the Dataframe names so they help you keep track of your work (Right-click on the dataframe in the Table of Contents [it will be called Layers by default] and select Properties. Under the 'General' tab change the names to Integer, Floating Point, Image, and State).
- Dataframe Properties>Data Frame> Fixed scale. A scale of 1:100,000 should be about right.
- Work on one data frame at a time, with landuse, aspect and outgrid image in separate data frames.
- In the layout view, add a legend for each data frame and size them to fit on letter-size page. Don't include anything but what should go in the data frame.
- Add a scalebar in kilometers
- Add a title and subtitle
- Include maps of aspect, landuse and tmcomp, into report (separate dataframes), with appropriate legend.

See the example on the next page.



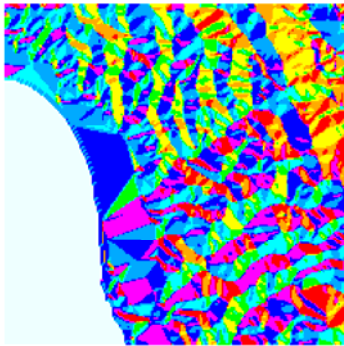
# Half Moon Bay

Raster Display of Three Phenomena: Integer, Floating Point, Image Data



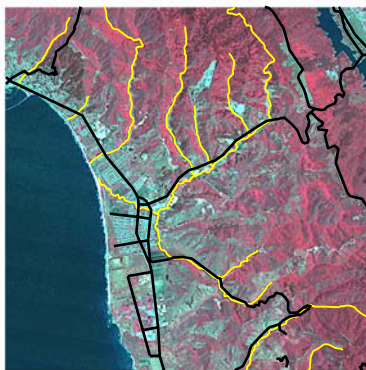
## Land Use/Land Covers

Commercial	Orchard groves vineyard nurseries
Cropland and pasture	Other agricultural land
Evergreen forest	Other urban or built-up
Herbaceous rangeland	Reservoirs
Mixed forest	Residential
Mixed rangeland	Shrub and brush rangeland
Mixed urban or built-up	Strip mines quarries and gravel pits
Ocean	Transport, communications and utilities



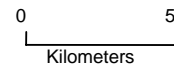
## Aspect

Flat (-1)	South (157.5-202.5)
North (0-22.5)	Southwest (202.5-247.5)
Northeast (22.5-67.5)	West(247.5-292.5)
East (67.5-112.5)	Northwest (292.5-337.5)
Southeast (112.5-157.5)	North (337.5-360)



## Landsat Image

- Road
- Stream



Source: J Davis Files